



## Making IT Infrastructure Invisible

Beat Müller: Senior Systems Engineer  
[beat.mueller@nutanix.com](mailto:beat.mueller@nutanix.com)

Make datacenter infrastructure invisible, elevating  
IT to focus on applications and services



Founded in 2009



1,500+ employees

# Gartner Magic Quadrant Integrated Systems 2015



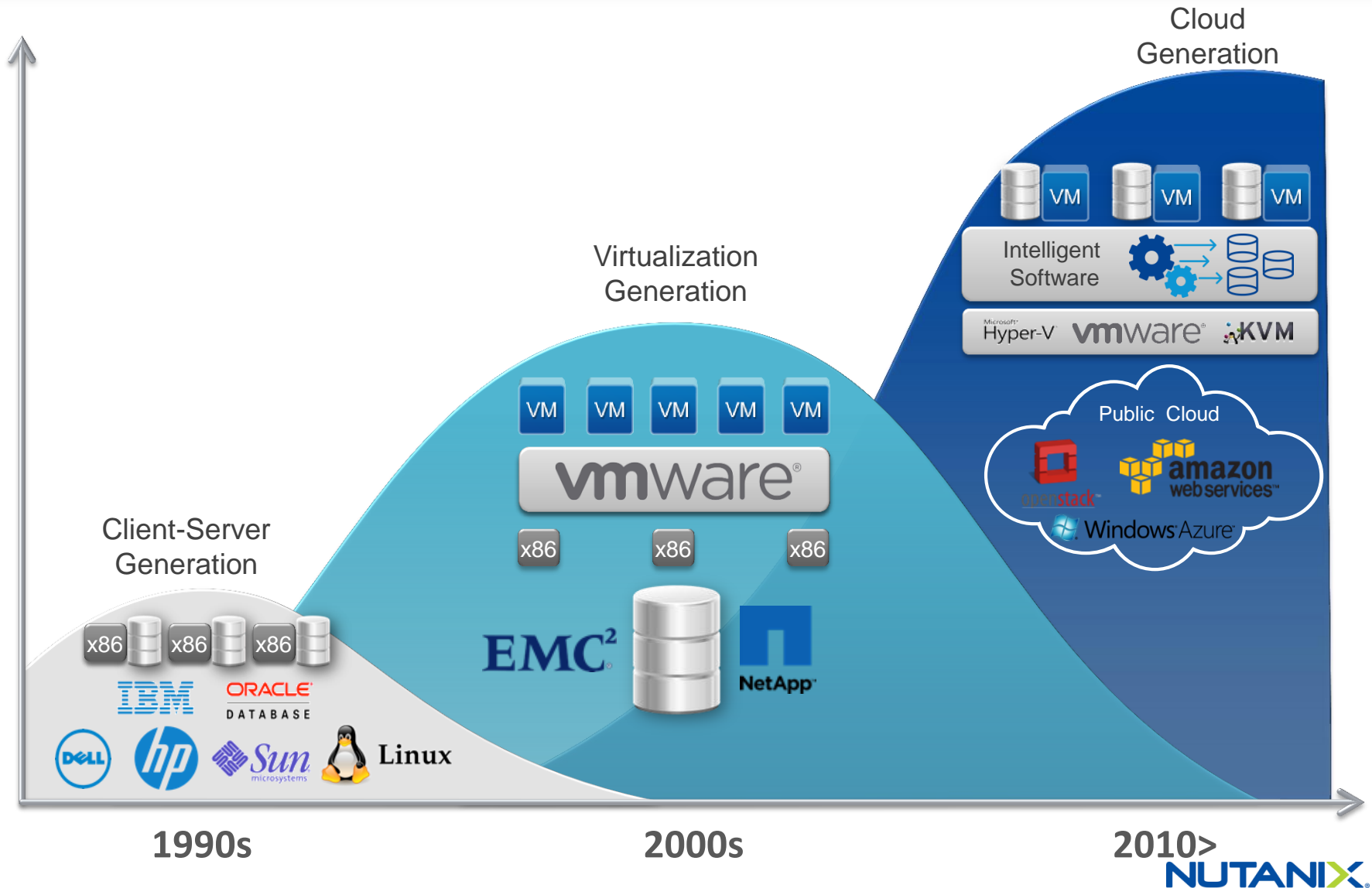
## Strengths

Nutanix is a complete infrastructure solutions company, providing its customers flexibility in their choice of hypervisors and cloud usage

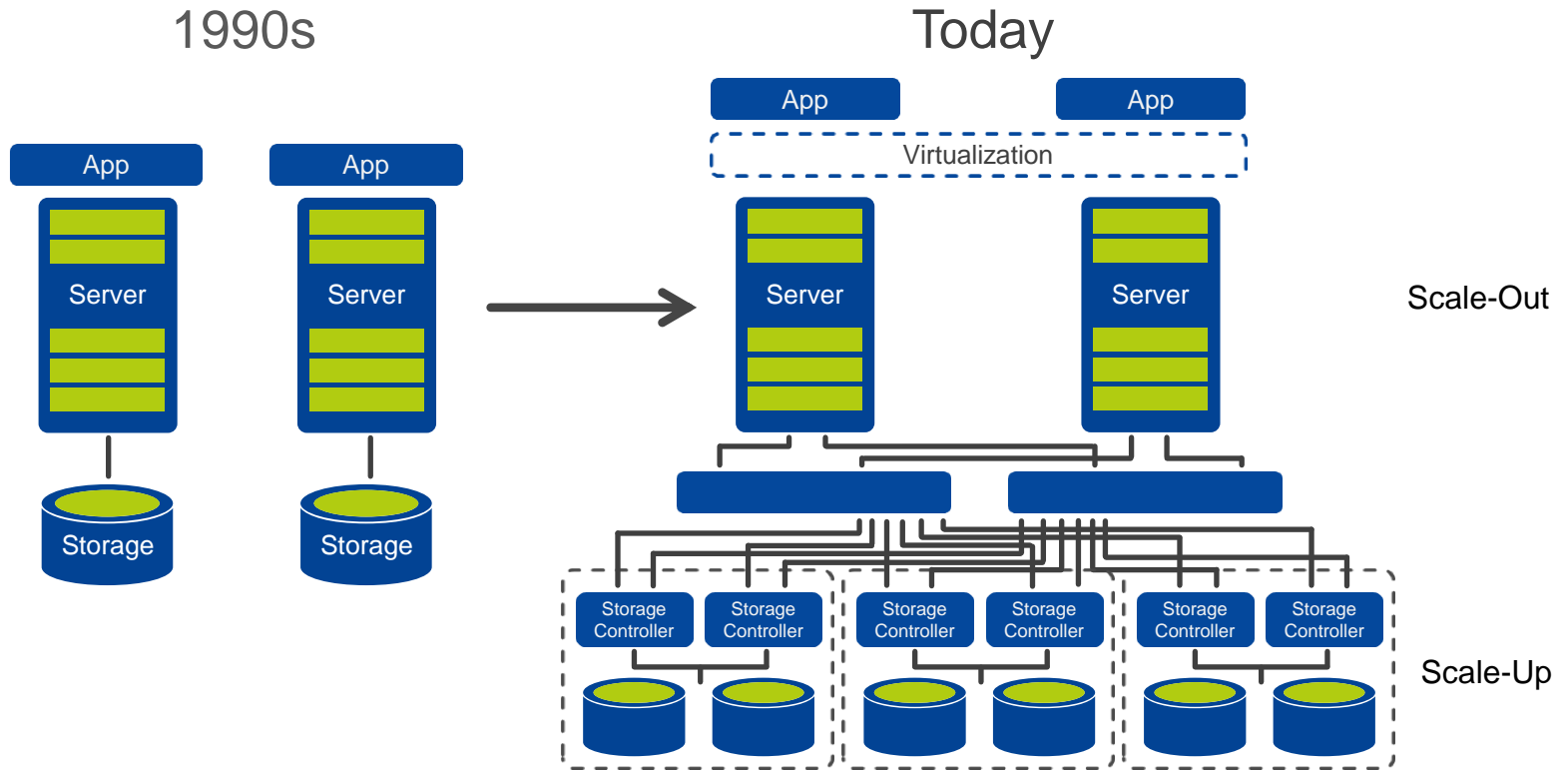
Nutanix has gained market credibility and established a worldwide presence

The Acropolis scale-out architecture, along with the ability to scale compute and storage independently, enables users to grow Nutanix deployments incrementally to meet application needs.

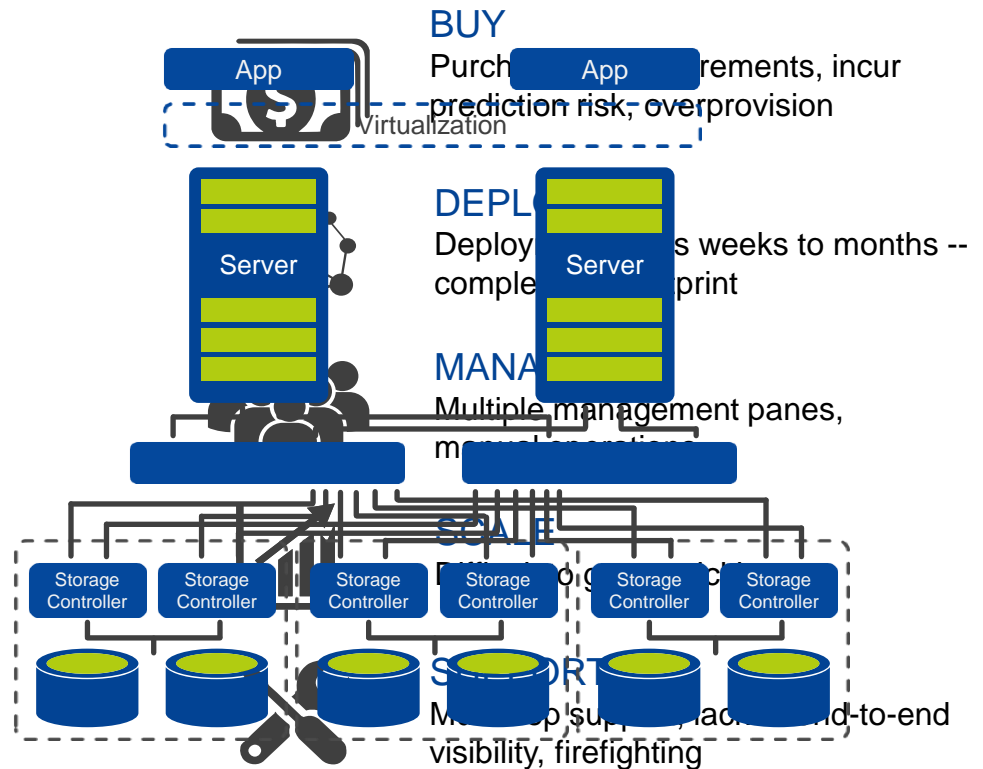
# Evolution of Datacenter Infrastructure



# > Evolution of Enterprise Infrastructure



# > Complexity at Every Step



# ➤ It's Time for a New (Software-Based) Approach

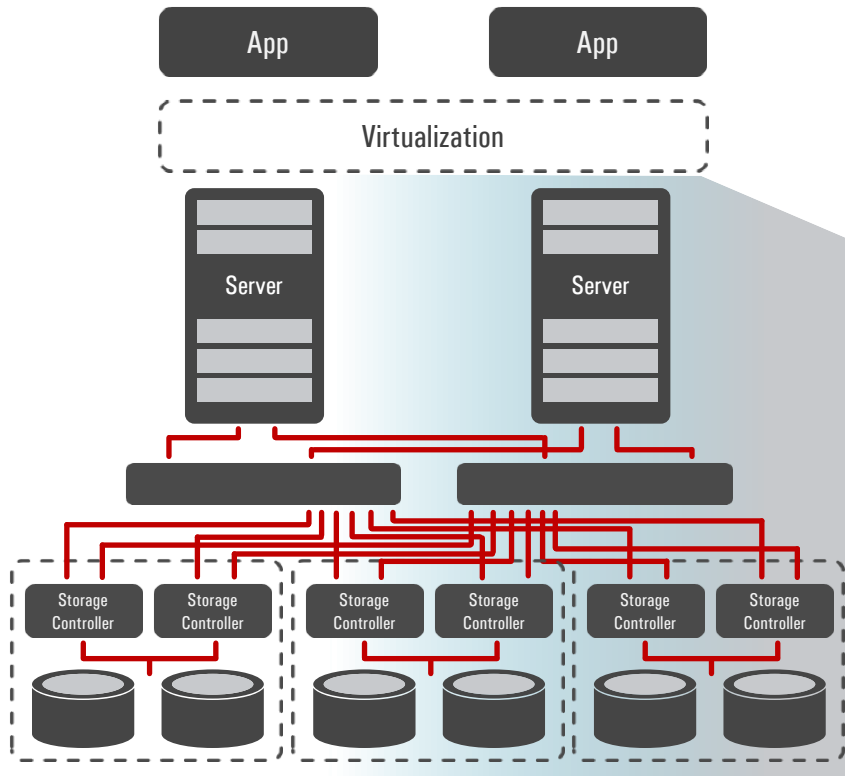
Bundled “converged”  
is out...



Software is in...



# > The Solution: Hyperconverged Infrastructure

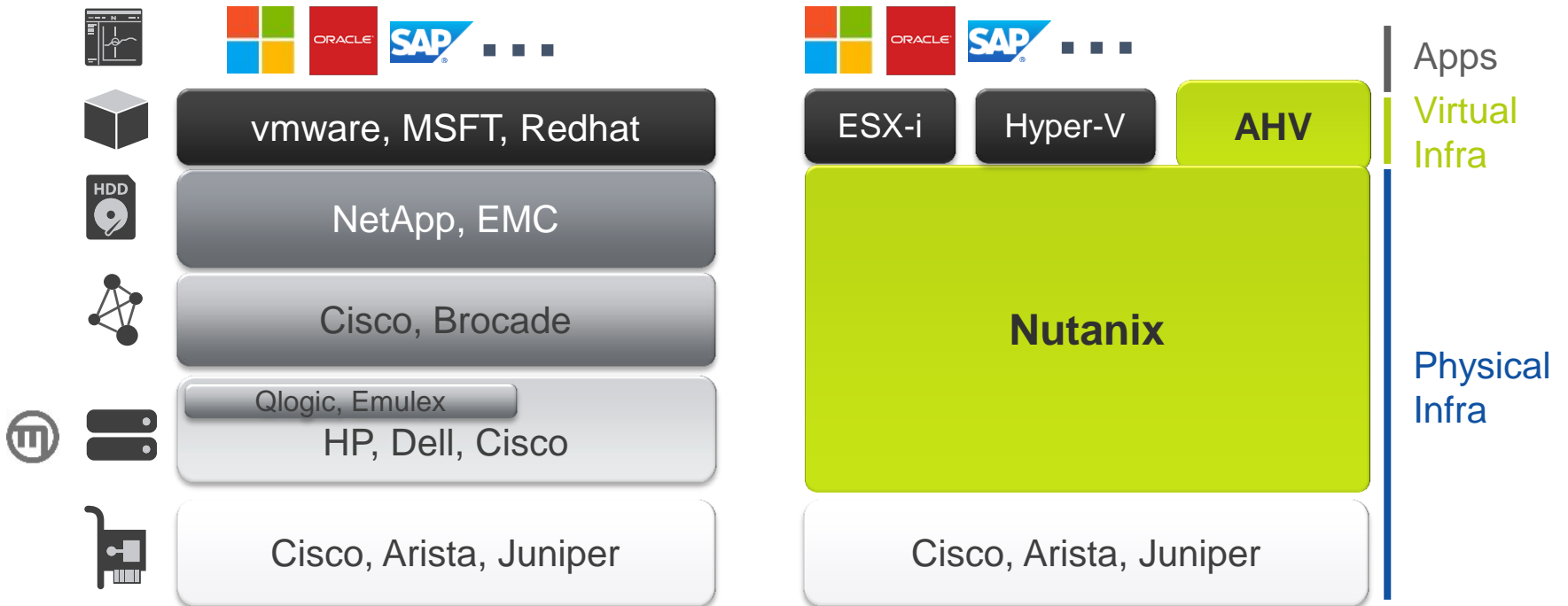


✓ Compute    ✓ Storage    ✓ Virtualization

Integrated compute and storage for virtualized environments



# > Datacenter Stack



# > How We Built It: Web-Scale Engineering



Commodity x86 servers for compute and storage



All intelligence in software



Scale-out architecture



Self healing systems



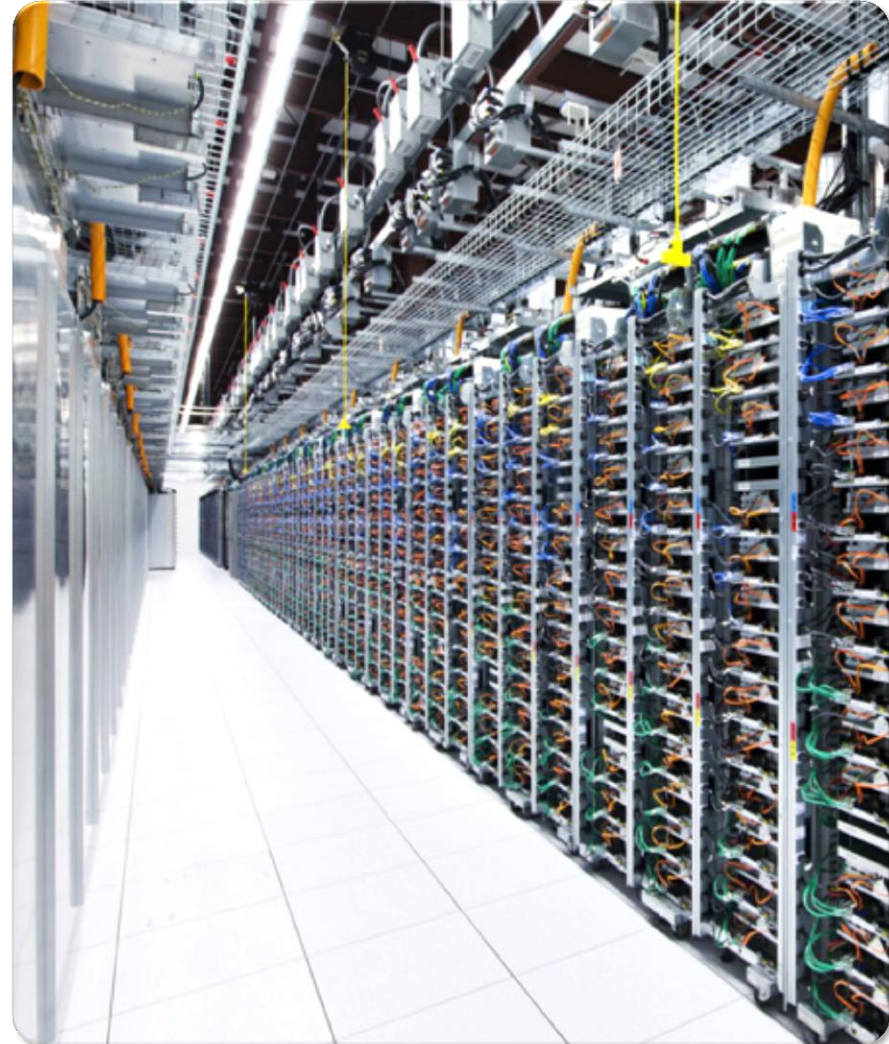
Rich automation and analytics

Google™

amazon  
web services™

facebook.

Microsoft Azure



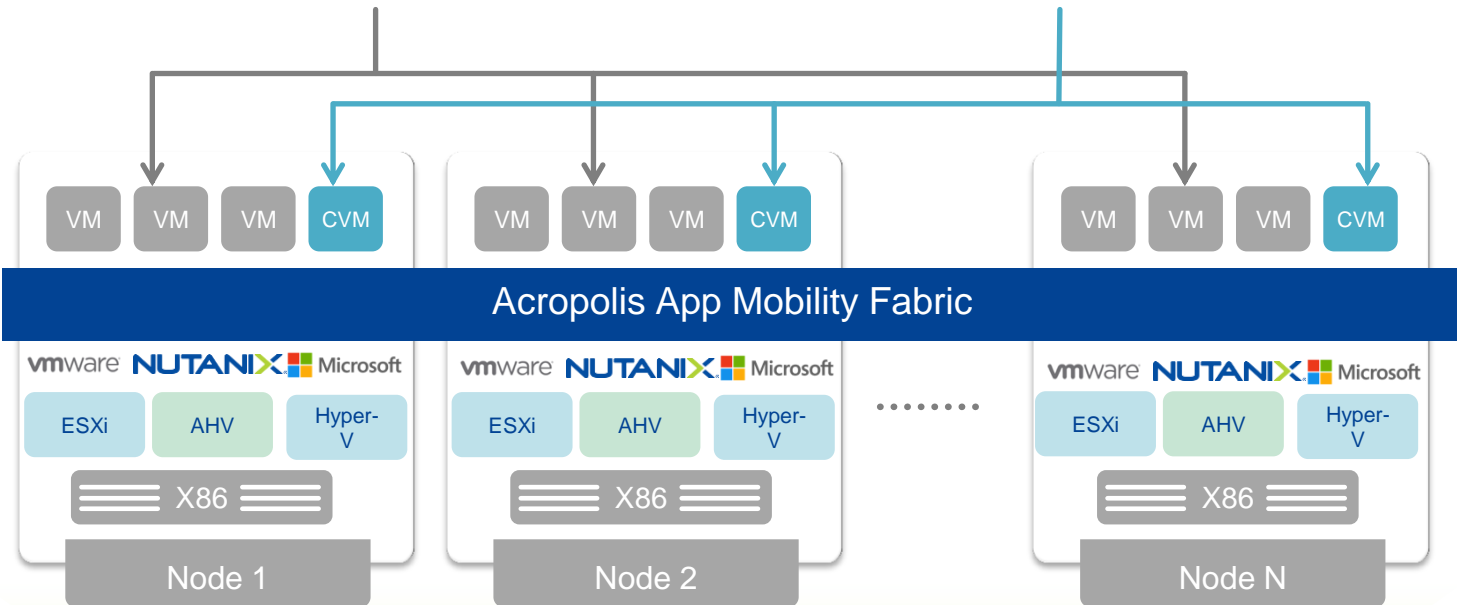
NUTANIX™

# > Nutanix Web-Scale Architecture



Tier 1 Workloads  
(running on all nodes)

Nutanix Controller VM  
(one per node)

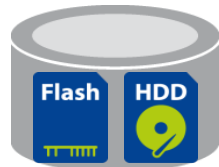


Workload  
Mobility and  
Hypervisor  
Choice

Local + Remote  
(Flash + HDD)

Distributed Storage Fabric

intelligent tiering, VM-centric management and more...



- ✓ Snapshots
- ✓ Clones
- ✓ Compression
- ✓ Deduplication
- ✓ Locality
- ✓ Tiering
- ✓ DR
- ✓ Resilience

Eliminates SAN  
and NAS arrays

# > Linear Scale-Out



## SINGLE NODE

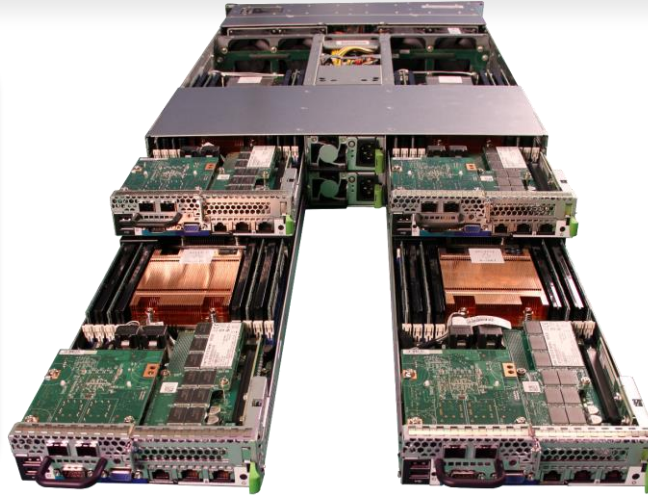
**Compute:** 16 Cores

**Storage:**

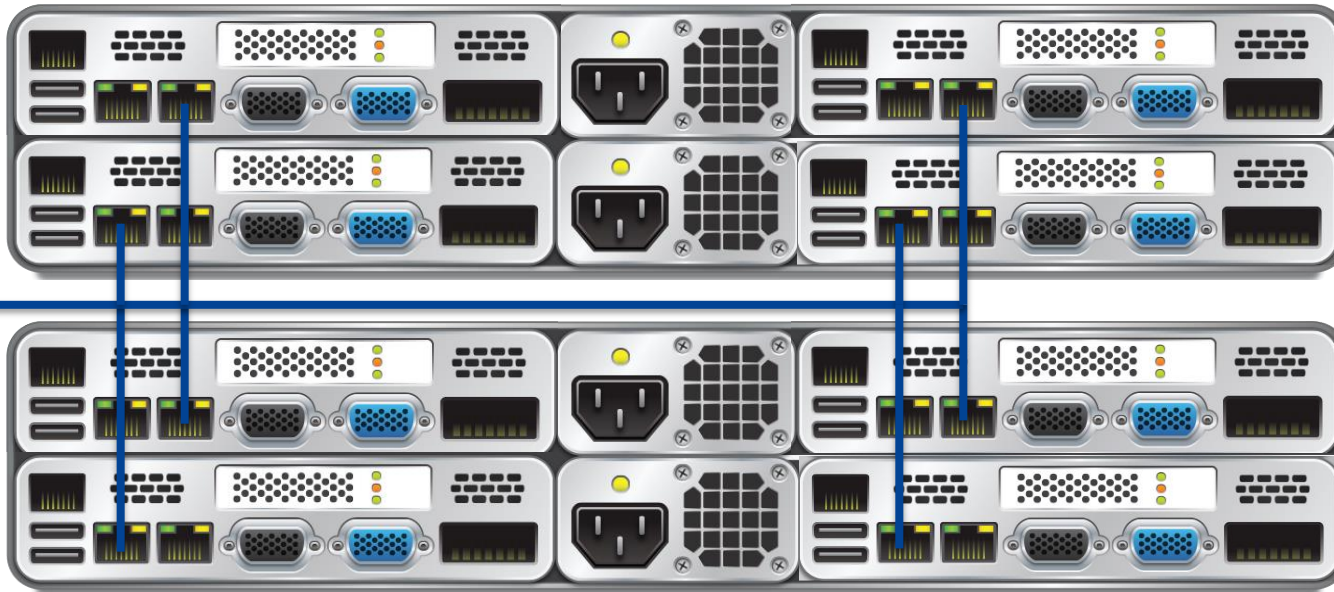
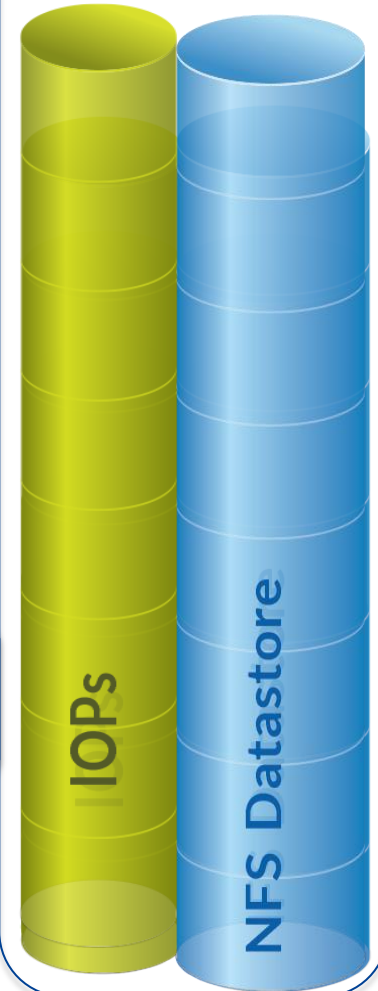
*Flash:* 800GB SSD

*HDD:* 4TB

*Controller:* Nutanix Storage controller



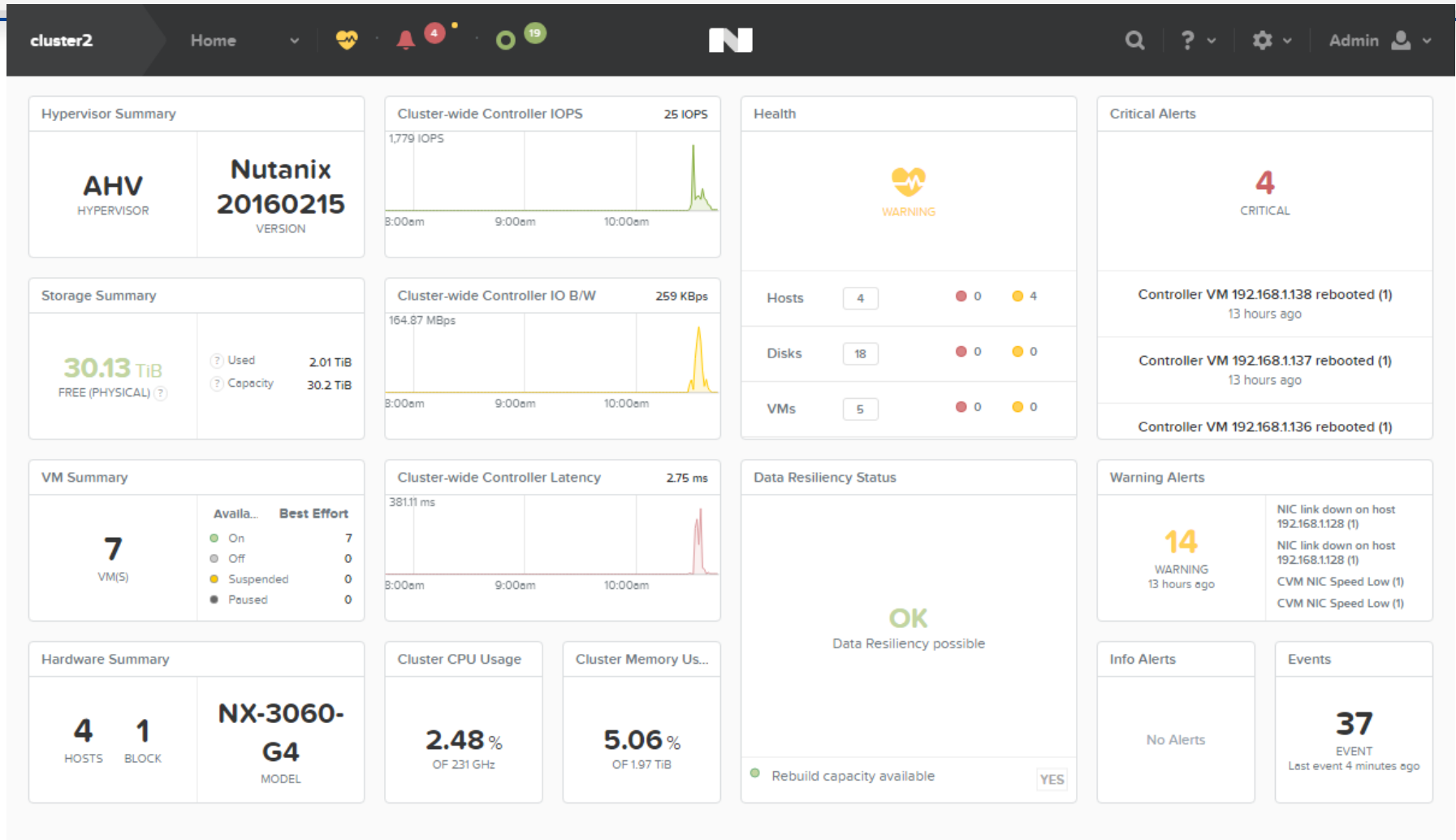
NDFS  
Pooled resources



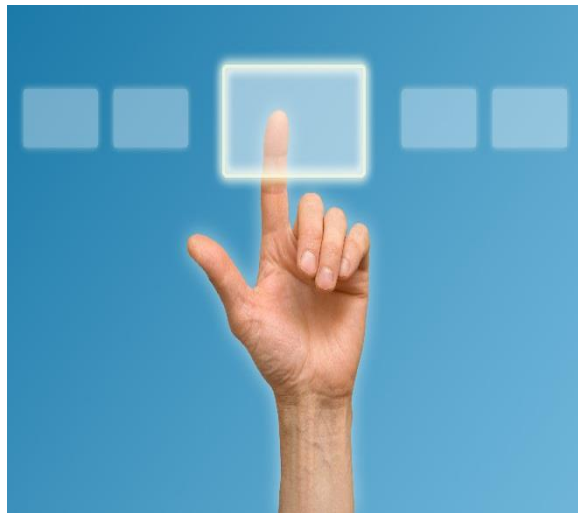
10Gbps Ethernet

NDFS

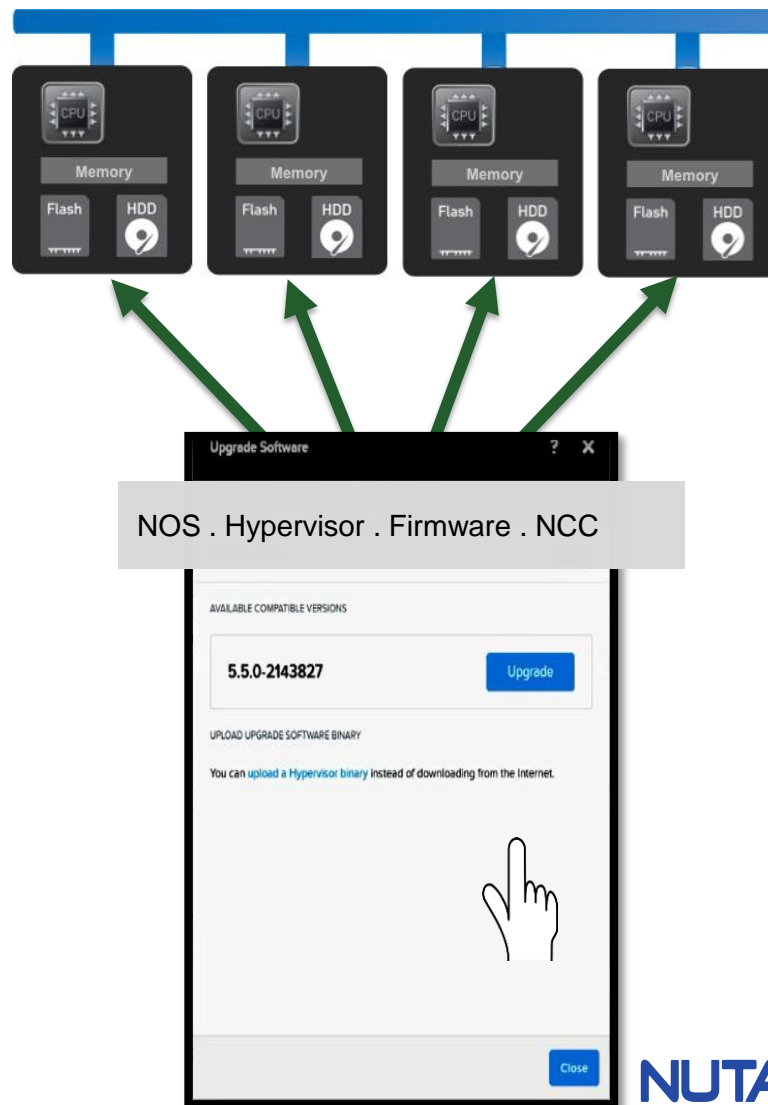
# Intelligence And Automation Thru Analytics



# > 1-Click Upgrades

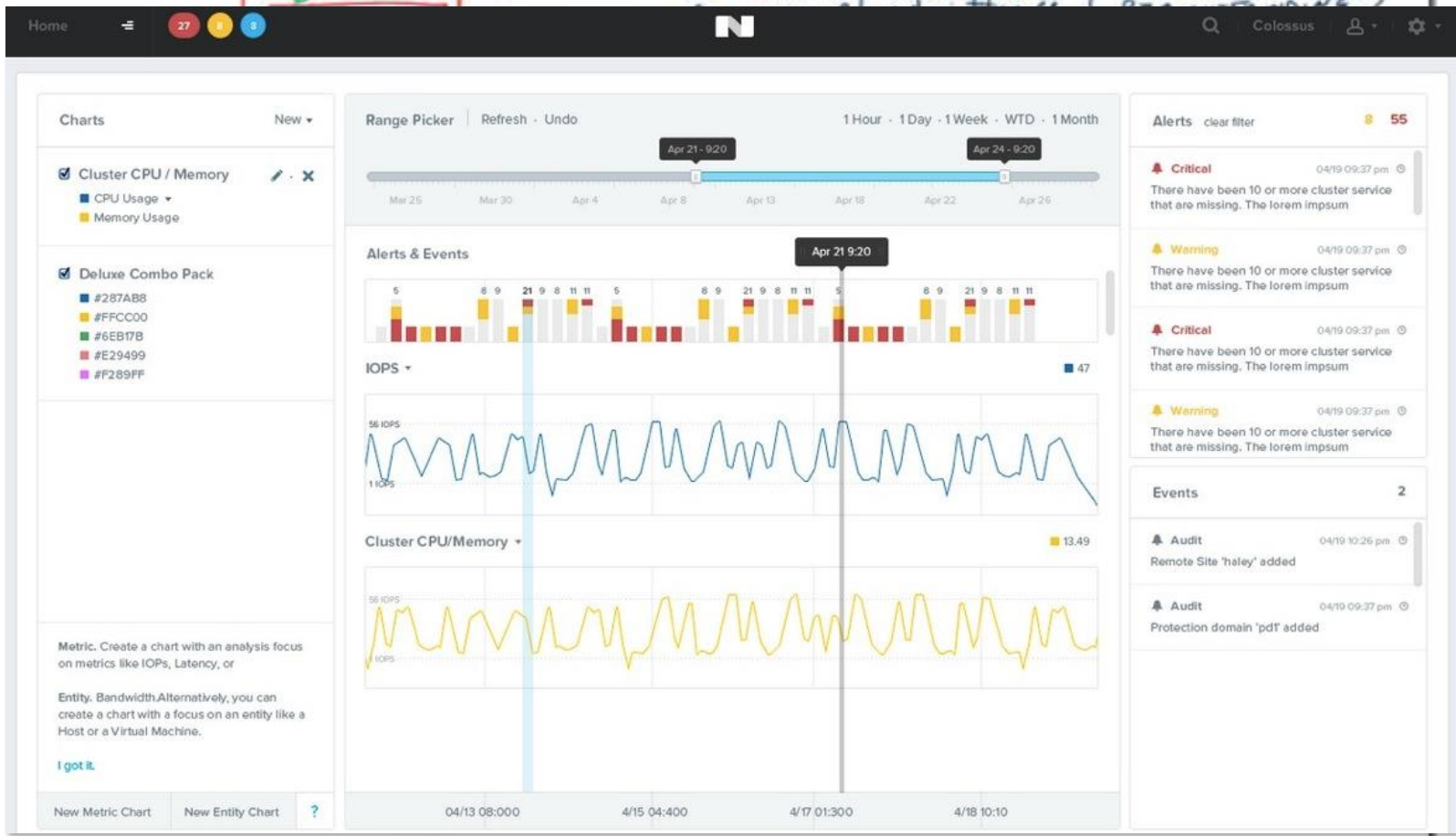


**Automatically** upgrade **Hypervisor, Nutanix OS, Firmware & Health Suite** non-disruptively with no manual intervention



# ➤ Troubleshooting – Old World / New World

2X faster time to issue resolution than legacy



# > Prism - Capacity planning

←
PuppyFood-ESX ▾
< Previous · Next >
+ Expand Cluster

Summary · Performance · Usage · Alerts · Tasks · **Runway**

CURRENT CLUSTER RUNWAY

## 9 weeks

- Storage Runway** 9 WEEKS >
- CPU Runway 23 WEEKS >
- Memory Runway 19 WEEKS >

RECOMMENDATIONS

**Add New Nodes**

Add new nodes to the cluster will help alleviate the runway problem. Estimate your new hardware here.

TARGET RUNWAY

Months ▾

FOR SIZE ESTIMATION, USE:

▾

Estimate

PuppyFood-ESX > Select App ▾

⚙️
📈
📅 ▾

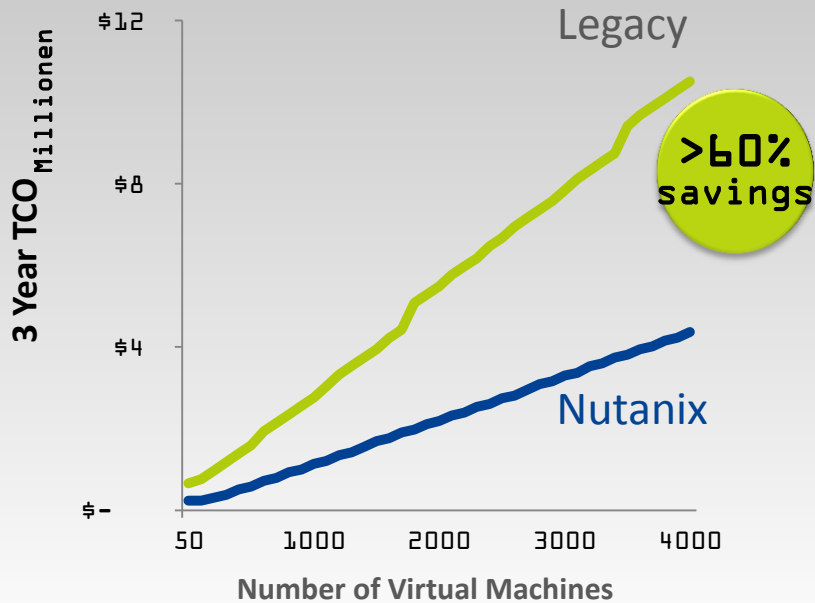
App
PD
Data

| USAGE TODAY                                      |           |     | RUNWAY GAINED BY REMOVING |           |                 |
|--|-----------|-----|---------------------------|-----------|-----------------|
| APP NAME   | SNAPSHOTS | VMS | PHYSICAL USAGE            | SNAPSHOTS | VMS + SNAPSHOTS |
| <span style="color: green;">■</span> eStore      | 1,093     | 23  | 45.8 TiB                  | + 7 Days  | + 10 Days       |
| <span style="color: teal;">■</span> Exchange     | 964       | 48  | 38.6 TiB                  | + 6 Days  | + 8 Days        |
| <span style="color: blue;">■</span> Sharepoint   | 823       | 19  | 27.2 TiB                  | + 5 Days  | + 8 Days        |
| <span style="color: purple;">■</span> CRM        | 801       | 27  | 11.4 TiB                  | + 4 Days  | + 7 Days        |
| <span style="color: purple;">■</span> VDI-Test-2 | 692       | 41  | 6.7 TiB                   | + 4 Days  | + 5 Days        |
| <span style="color: purple;">■</span> HR-4       | 643       | 38  | 4.8 TiB                   | + 3 Days  | + 5 Days        |

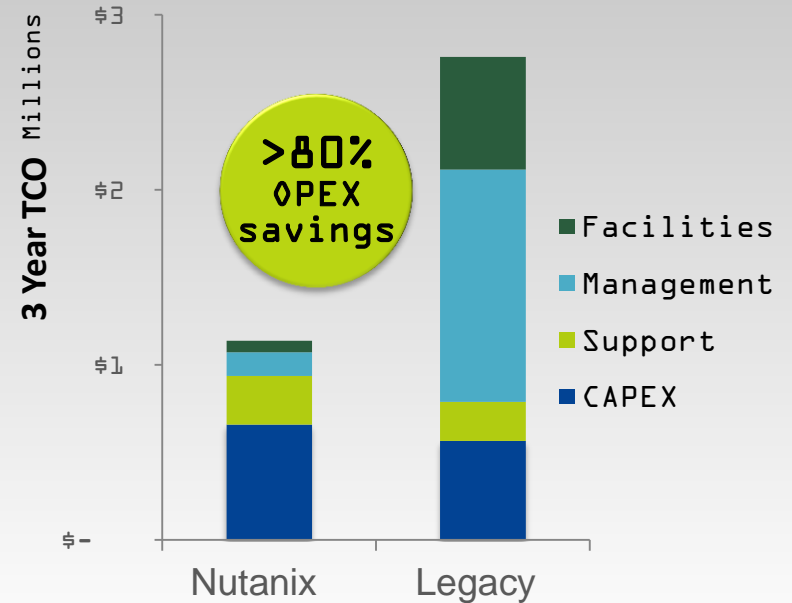


# > Nutanix delivers lower TCO than legacy Infrastructure

## TCO: Nutanix vs. Legacy



## OpEx Savings vs. Legacy



# Nutanix

5-10x less time | 5-10x times less space | 5-10x times less power & cooling

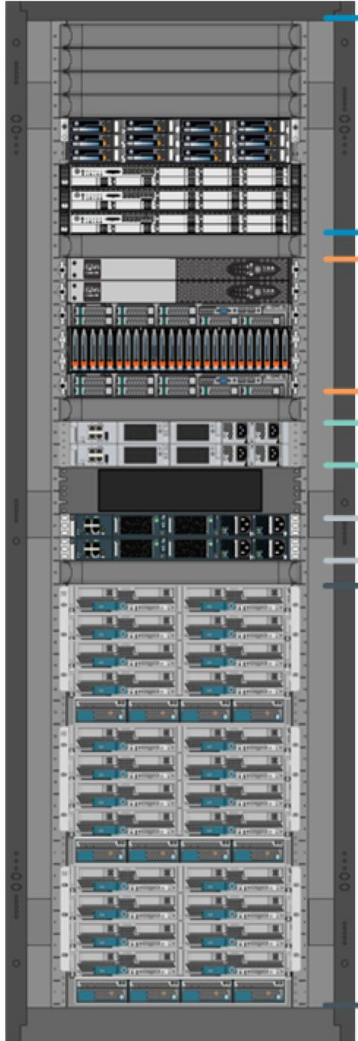
Notes: 3-Year TCO for medium type, server VM. Legacy includes: EMC VNX and Cisco UCS

Opex Savings @ 1000 VMs

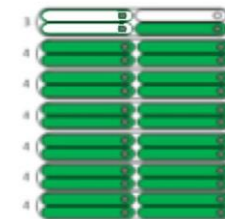


# > VCE vBlock (VMWare, Cisco & EMC) vs Nutanix

2500 users, 100% VDI



|                      | vBlock   | Nutanix  | Difference      |
|----------------------|----------|----------|-----------------|
| Power (Watt)         | 19510    | 7987     | <b>11523</b>    |
| Heat (BTU)           | 51223    | 31432    | <b>19791</b>    |
| Rackspace (RU)       | 35       | 20       | <b>15</b>       |
| Cost to run (\$/yr)  | \$50,707 | \$20,759 | <b>\$29,949</b> |
| Cost to cool (\$/yr) | \$39,007 | \$23,930 | <b>\$15,078</b> |
| Total cost (\$/yr)   | \$89,714 | \$44,688 | <b>\$45,026</b> |
| Per user (\$/yr)     | \$36     | \$18     | <b>\$18</b>     |
| % costs saved        |          |          | <b>50%</b>      |



**NUTANIX**

Source: Vblock Specialized System for Extreme Applications with Citrix XenDesktop 7.1, page 28  
Released: april 2014

# > Why virtualize with Nutanix?

## > Uncompromisingly simple

30 to 60 minute deployment. No storage expertise required.

## > Rapid and seamless scalability

Scale datacenters one server at a time with zero downtime

## > Predictable performance

Fast and linear performance at any scale

## > Lower TCO

No more IT silos → 40-60% management savings  
5 to 10 times less space, power and cooling

## > Better Business agility

Fastest time to value. Pre-validated solutions.

The Nutanix logo is displayed in a large, semi-transparent circular graphic on the left side of the slide. The logo consists of the word "NUTANIX" in a bold, blue, sans-serif font, followed by a stylized green and blue "X" symbol. A registered trademark symbol (®) is located to the right of the "X".

**NUTANIX**®

**NUTANIX**®

 @nutanix

Thank You